

LeagueLine 40.09

www.alnnj.org

What we do: 3

The bi-annual issue of our members' work



↓
PRIVATE HOME
Oradell, NJ

Built in the mid 1800's this Victorian styled home was purchased by a young family of five. The client's requirements were to maintain the original character by matching all interior and exterior details of the original home. The addition was approximately 3000 square feet in area. It contains a new kitchen, family room, butler's pantry area, and rear entry foyer. Also on the first floor is a full guest suite including bedroom, living room with fireplace, walk in closets and bathroom. The second floor of the addition contains a master suite, laundry room, private office, guest room, and two additional bathrooms. The work included a full remodeling of the remainder of the existing second and the third floors.

Scott F. Laurie, AIA
Scott F. Laurie Architect
Oradell, NJ
www.sflarc.com



↓
DR. JOHN GRIECO ELEMENTARY SCHOOL
Englewood, NJ

This is the first new school to open in the City of Englewood in over half a century. The three-story facility houses 48 classrooms, art and music rooms, a library/media center, gymnasium, and a cafeteria that doubles as a multipurpose room. The \$18 million, state-of-the-art school, which has an operating capacity of 780 students, is home to children in the first, second and third grades.

John P. Capazzi, AIA
RSC Architects
Cliffside Park, NJ
www.rscarchitects.com



↓
GLENRIDGE PUBLIC LIBRARY
Glenridge, NJ

The library was designed with historically accurate features made suitable for today's modern library functions. Custom period woodworking for the main shelving, the new circulation desk, furniture and lighting were carefully selected to compliment the aesthetic qualities of the dramatically vaulted Main Reading Room.

Anthony Iovino, AIA, PP, LEED
Arcari + Iovino Architects PC
Little Ferry, NJ
www.aiarchs.com



↓
MEADOWLANDS RAIL STATION
East Rutherford, NJ

This facility opened to the public in July 2009 and provides mass transportation to the Meadowlands Sports Complex venues.

Kurt Vierheilg, AIA, LEED AP
DMR Architects
Hasbrouck Heights, NJ
www.dmrarchitects.com

Background photographs by allied member
© **Thomas H. Kieren**
Custom Corporate Photography
www.customcorpphotog.com

Gehny Library, Princeton University
Architect: Frank Gehry, AIA

"I cannot endure to waste anything as precious as autumn sunshine by staying in the house. So I spend almost all the daylight hours in the open air." *~Nathaniel Hawthorne*

PRESIDENT'S COLUMN



I have been patiently awaiting the 4Q issue of the Leagueline — It is a great opportunity to share your work and passions with other members. We hope you take the opportunity to participate every year!

Although we slowed down a bit for the summer, Steven Lazarus and the Programs Committee have been busy working on gearing up for a busy Fall. The programs we have planned promise to be informative and engaging.

Here is a quick flashback of some recent events:

June 15, A Joint Meeting with the US Green Building Council NJ Chapter was held at Maggianos Little Italy at the Riverside Square Mall in Hackensack where the topic was "Architecture 2030 and Carbon Neutrality" presented by Jason Kliwinski.

The 2030 Challenge asks the global architecture and building community to adopt the following targets:

■ All new buildings, developments and major renovations shall be designed to meet a fossil fuel, GHG-emitting, energy consumption performance standard of 50% of the regional (or country) average for that building type.

■ At a minimum, an equal amount of existing building area shall be renovated annually to meet a fossil fuel, GHG-emitting, energy consumption performance standard of 50% of the regional (or country) average for that building type.

■ The fossil fuel reduction standard for all new buildings and major renovations shall be increased to: 60% in 2010, 70% in 2015, 80% in 2020, and 90% in 2025. Carbon-neutral in 2030 (using no fossil fuel GHG emitting energy to operate). These targets may be accomplished by implementing innovative sustainable design strategies, generating on-site renewable power and/or purchasing (20% maximum) renewable energy and/or certified renewable energy credits.

■ More information available online at <http://www.architecture2030.org/>.

June 25, Our 3rd Annual YAF Golf Clinic took place at the Willowbrook Golf Center in Wayne thanks to the event coordinator, John Bryjak.

July 13, The 10th Annual Golf Outing was held at the Apple Ridge Country Club in Mahwah. Although this has been a challenging economic year, Kim V. Vierheilig and her committee pulled off another great event thanks to all our members, allied members, and sponsors. The earnings from this event will help us support the scholarship program.

August 16, We sailed the Hudson River on the historic sloop CLEARWATER (out of Riverfront Park in Beacon, NY). Afterwards we lunched and toured DIA: BEACON — the world-class museum/contemporary art center created to house major installations most museums cannot accommodate (www.dia.beacon.org). Located on the Hudson River in Beacon, New York, Dia:Beacon occupies a nearly 300,000-square-foot historic printing factory; the building itself is on the national historic register. Special thanks to Fay Logan, Past President, for setting up such a wonderful day of Hudson History and Art Enlightenment which was approved for 2 AIA HSW/SD LU's.

August 20, The Scholarship Committee led by Richard Bettini received many applications from various accredited Architecture schools from around the country. He and his team of jurors meticulously reviewed each submission and will be presenting various awards at the 2010 Installation Dinner.

We hope to have a great turn out at all of the tours, meetings and events planned for this Fall. Check the calendar in this edition and your e-mail for more information on a program that interests you. If you have any ideas for a program or special event please contact me.

Frank Cunha III, AIA
AIA-ALNNJ President 2009

"Everything is based on mind, is led by mind, is fashioned by mind. If you speak and act with a polluted mind, suffering will follow you, as the wheels of the oxcart follow the footsteps of the ox. Everything is based on mind, is led by mind, is fashioned by mind. If you speak and act with a pure mind, happiness will follow you, as a shadow clings to a form." *~Buddah*



THE ARCHITECTS LEAGUE
OF NORTHERN NEW JERSEY

FRANK CUNHA, III, AIA
PRESIDENT

JOYCE RASPA-GORE, AIA, Esq.
PRESIDENT-ELECT

BEN LEE, AIA
FIRST VICE PRESIDENT

STEVEN B. LAZARUS, AIA
SECOND VICE PRESIDENT

JOSEPH F. SARRA Jr., AIA
SECRETARY

DONNA BERARDO, ASSOC., AIA
TREASURER

KIM V. VIERHEILIG, AIA
PAST PRESIDENT

TRUSTEES 2009

JOHN BRYJAK, AIA
LAURENCE E. PARISI, AIA
STACEY RUHLE KLIESCH, AIA
BOBBY KAPLAN, AIA

TRUSTEES 2010

KEVIN C. GORE, AIA
DAN CUMMINGS, ASSOC., AIA
AMY HUMMERSTONE, AIA
FAY W. LOGAN, AIA

TRUSTEES 2011

MANUEL J. PEREIRAS, AIA
RICHARD BETTINI, ASSOC., AIA
JOSEPH BIANCO, AIA
KIM V. VIERHEILIG, AIA

Leagueline

Leagueline is also available online:
www.alnnj.org

NEWSLETTER COMMITTEE

ANTHONY IOVINO, AIA
DIRECTOR / EDITOR
aiovino@aiarchs.com

FAY WILLIAM LOGAN, AIA
DIRECTOR / EDITOR
flogan@sns-arch-eng.com

JOYCE RASPA-GORE, AIA, Esq.
DIRECTOR / EDITOR
joyceraspagore@yahoo.com

FRANK CUNHA, III, AIA
EDITOR
fc3aia@gmail.com

PAUL S. BRYAN, AIA
ADVERTISING COORDINATOR / EDITOR
pb@lan-nj.com

D. BRUCE ZAHOR
ZAHOR DESIGN OFFICE INC.
GRAPHIC DESIGN & PROJECT MANAGEMENT
www.zahordesign.com

What we do: 3

Architects League members, the 2009 4Q issue of our Leagueline has returned to the theme of WHAT WE DO. Again, you have had the opportunity to share your creative ideas and professional work with your colleagues. This is the sixth year of our re-formatted Leagueline, and those six years have given us a number of opportunities to use the design-themed 4Q issue to "show the stuff we are made of". It is difficult getting the attention of busy architects to gather their images and thoughts of "the special project" and to email them to your Leagueline. However, once they started coming, we received a very wide range of exciting projects – from small and personal to large and commercial/institutional. The profession is alive!

It can be noted that few if any, of the projects have been presented as LEED certified. That will change in the coming years. Already, Municipal, State, Federal and institutional regulations are going to make it difficult, if not mandatory, for new construction to be as environmentally friendly as possible.

You will note that we have used projects from individual designers, even if there were more than one member in a firm. Many thanks to all of you who gave your time and effort to participate in this issue.

Once again, the incredible style and look of our Leagueline is owed to our talented graphic designer Bruce Zahor. We give him the bones, but he produces the colorful and exciting body, not only of this 4Q issue, but all four issues through the year.

Check out your colleagues' submissions and share their pride in the articulate practice of our profession. As has been said before, we have that very special opportunity to shape the environment of and for our fellow human beings.

Fay W. Logan, Editor L4Q 09



PRIVATE RESIDENCE Northern, NJ

A Traditional New Residence
in Northern New Jersey.

Chris Blake, AIA
Chris Blake Architect
Tenafly, NJ
www.chrisblakearchitect.com



FOUR SEASONS HOTEL Washington, D.C.

LAN Associates, Inc. in partnership with Sowinski Sullivan Architects and Anderson Miller Ltd, recently completed an 11-room addition including a 4,000 s.f. Royal Suite at the Four Seasons Hotel in Washington, D.C. The Four Seasons is Washington's only Five Diamond Hotel and serves the needs of diplomats and celebrities from around the world.

The design of the Royal Suite, beyond providing a luxurious retreat, addressed acoustical concerns to isolate the room from a restaurant tenant below and heightened security risks. The suite has a contemporary design with rich wood detailing contrasted against limestone and complimented with crystal fixtures designed by Yarnell Associates.

The suite includes a dining room, 1,000 s.f. furnished terrace, private living quarters inclusive of his & hers walk-in closets, oversized master bath with soaking tub and shower, private office, exercise room with massage table, a media room complete with 60" television accompanied with Bang & Olufsen digital surround sound and an outdoor terrace overlooking 29th street and Pennsylvania Avenue designed by EDSA. The suite has complete wireless internet access and the dining room has been designed to accommodate video conferencing needs.

The design of the addition was configured to allow for seamlessly adding one or two adjacent suites to the Royal Suite. For those guests requiring more stringent security concerns and space requirements, the entire eleven room wing can be rented with secure private access from Pennsylvania Avenue.

Kim V. Vierheilg, AIA, LEED AP
LAN Associates E.P.A.S., Inc.
Midland Park, NJ
www.lan-nj.com



SELF - SUFFICIENCY CAMPUS Town of Newton, NJ

Completed in 2008, this four building campus houses a private non-profit social service agency which provides a full range of services for low income single parents, teen parents, displaced homemakers and two-parent families.

The building designs create a warm and caring environment, with the angled wings of the main building embracing clients as they enter for counseling or job training. A separate educational center building provides meeting rooms; a smaller-scaled day care center serves the clients' children; and an existing 100 year old brick building was renovated to serve counseling and educational needs. Geothermal ground source heat pump systems serve two of the buildings on campus to reduce heating and cooling energy consumption; and sustainable materials were installed throughout the buildings.

Alan Spector, AIA
Spector Associates Architects
Lafayette, NJ
www.spectorarch.com



INTERNATIONAL HIGH SCHOOL Paterson, NJ

The New International High School in Paterson embodies the efforts of a dedicated steering committee which generated programming and design goals to celebrate diversity and promote global awareness in an atmosphere of scholastic excellence.

The 115,000 SF facility, a dynamic environment for 600 students, is massed in distinct architectural blocks. At the center, instructional spaces ring a three-story Atrium where circulation, via a monumental stair, overlooks Paterson's historic downtown. The sawtooth roof monitors, reminiscent of local industrial architecture, draw light through the core.

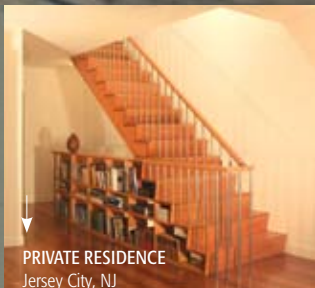
The Auditorium, at the highest elevation, houses performances, student roundtable activities and conflict resolution modeled on United Nations practices. The Gymnasium is adjacent to small athletic fields at the lower end of the site. In the central block, the Media Center, with expansive windows, and Cafeteria flank the Atrium. Such public spaces, on the first two floors, accommodate secure, shared community use. Upper floors house Classrooms, Labs, and Faculty Work-rooms.

Rebecca Uss, NCARB, LEED, AP
L+C Design Consultants PA
Secaucus, NJ
ussr@mllc.com

PRIVATE RESIDENCE Jersey City, NJ

Natural light is brought into the center of this narrow townhouse in Jersey City through a skylight over the stairwell. The stair tread becomes the bookshelf, serving as both storage and railing.

James Cornell, AIA, LEED AP
James Cornell Architect
Jersey City, NJ
jamescornelljr@gmail.com



Background photographs by allied member
© Thomas H. Kieren
Custom Corporate Photography
for an unobstructed view of Tom's great work
visit: www.customcorpphotog.com

Gehry Library, Princeton University
Architect: Frank Gehry, AIA

What we do: 3

MONROE TOWNSHIP PUBLIC LIBRARY Monroe, NJ

The design features non-traditional library spaces such as interactive learning spaces for children and a fine art gallery. The 44,000 sf space remains intimate in scale through the use of clear lines of circulation and defined destination points.

Edward Arcari, AIA, PP, LEED
Arcari + Iovino Architects PC
Little Ferry, NJ
www.aiarchs.com



PRIVATE RESIDENCE Teaneck, NJ

A three story rear and side addition to a 100 year old eclectic shingle style/tudor board home with porch seamlessly respects home's original details and spirit.

Malka van Bemmelen, AIA, LEED AP
Van Bemmelen Architecture LLC
Teaneck, NJ
www.vanbemmelenarchitecture.com



MERCEDES BENZ DEALERSHIP Northern, NJ

We have been fortunate that Mercedes-Benz-USA has been a client over the years and privileged that dealerships have come to SNS for the design of their "Autohaus" corporate design programs.

A new out-of-the-ground showcase dealership is to be built in Northern New Jersey in the coming year.

Fay W. Logan, AIA, LEED AP
SNS Architects & Engineers, PC
Montvale, NJ
www.sns-arch-eng.com



CAR WASH Ramsey, NJ

A new 10,000 square foot full service car wash with four oil change bays and three detailing bays in Ramsey, NJ.

John J Gilchrist AIA
John Gilchrist Architect PC
Montvale, NJ
J.GilchristAIA@aol.com



HASKELL SCHOOL Wanaque, NJ

Having grown up in Wanaque, the Haskell School has always been a familiar landmark to me. But the juxtaposition of the 1950s era, industrial looking façade with the original, early 1900s schoolhouse never quite made sense and I always wished I could do something about it. As fate would have it, LAN Associates was presented the opportunity to redesign the façade as part of an intensive renovation of the Wanaque Public Schools. It was amazing to have a hand in transforming a building I had literally spent most of my life wanting to change. The result not only creates a more cohesive appearance, but also complements the ongoing redevelopment and streetscape efforts along the Borough's main thoroughfare.

Paul S. Bryan, AIA, LEED AP
LAN Associates E.P.A.S., Inc.
Midland Park, NJ
www.lan-nj.com



PRIVATE RESIDENCE Summit, NJ

The site in Summit NJ was ideal for constructing an interpretation of a "Colonial" style home for a modern family. The existing foundation and structural framing of the existing Ranch home were left mostly intact during the renovations and additions. Highlights include a new front porch, a renovated dining room and living room (old Master Bedroom and Living Room), a new office (old bedroom) a new wood staircase up to the bedroom level with 3 spacious bedrooms, including a Master Bedroom with His and Hers closets as well as a Master Bath with a large skylight and a Walk-in-Closet. A 2-story Family Room with cathedral ceiling connects to the outdoors (both physically and visually through large glass apertures) and a brand new open Kitchen (old Kitchen and Dining Room) with a large granite-top island. A wooded spiral staircase takes you from the Family Room to an overlooking balcony above which is connected to the Hall. The existing garage received a face-lift and a Bonus Room above to balance out the front elevation. Originally, the clients wanted a modern stucco-style building and it was rewarding for me as an Architect to open up their minds to exploring various options which are more contextual to the residential neighborhood known for its architectural beauty. It was fun to work with clients who listened to me as much as I listened to them and we are all completely satisfied with the end result.

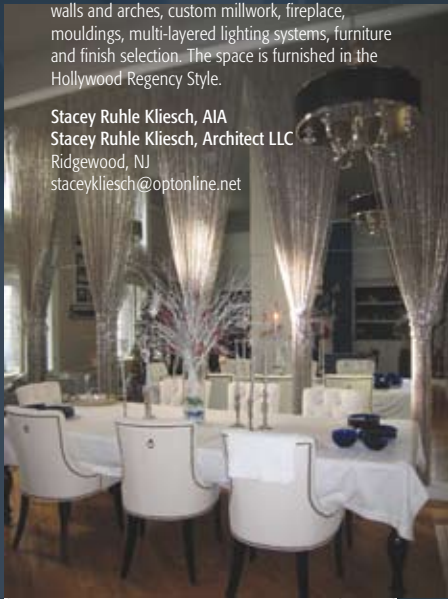
Frank Cunha III, AIA, NCARB
FC3 Architecture+Design, LLC
Hamburg, NJ
www.fc3arch.com



LOFT RESIDENCE
New York City, NY

The Hubbard Residence is an interior renovation project for a residential loft in the historic Sugar Warehouse in NYC. The space was an empty white box that we enhanced with a new staircase, curved walls and arches, custom millwork, fireplace, mouldings, multi-layered lighting systems, furniture and finish selection. The space is furnished in the Hollywood Regency Style.

Stacey Ruhle Kliesch, AIA
Stacey Ruhle Kliesch, Architect LLC
Ridgewood, NJ
staceycliesch@optonline.net



STUDENTS PROJECT

My professional life is focused on teaching pre-Architecture to HS students. This past year I have been able to obtain a number of grants to provide my HS with a number of environmental sustainable grants. The first awarded was issued by the *National Environmental Education Foundation* to rebuild an unfinished greenhouse. There were only 26 such grants issued to schools in the entire country. The second grant was from *Stevens Institute of Technology's Center for Innovation in Science and Technology* to design and build a Biodynamic Gardening system. So far I have been able to get all the construction materials needed to build our greenhouse donated by Kuiken Brothers and construction will begin this Fall. Photos shown consist of existing conditions and working drawings done by my advanced AutoCAD students for the site.

Richard Bettini, Associate AIA
Full time CAD Drafting Instructor
(Pre Architecture & Engineering)

West Essex Regional High School
North Caldwell, NJ
rbet472357@aol.com

SECAUCUS RECREATION CENTER
Secaucus, NJ

This state-of-the-art center features weight training and fitness machine areas, an aerobics studio, and a member's lounge. A multi-purpose gym with a full-length basketball court is surrounded by an elevated three-lane running track. One highlight of the facility is the Olympic-size swimming pool. Complete with an observation deck, the pool is a hybrid design that can be used for swim meets, as well for recreational use.

John P. Capazzi, AIA
RSC Architects
Cliffside Park, NJ
www.rsearchitects.com



PRIVATE HOME
Passaic Park, NJ

Alteration, Restoration, New Addition – Modern style concrete structure flat roof stucco home directly across from Third Ward Park.

William J. Martin WJM Architect analyzed the style and unique structure developing a design strategy for an addition and alteration. The design goals included retaining the style and character of the exterior, terrazzo flooring and ashlar concrete block interior walls. Design was to be respectful of, and consistent with, the original design as much as possible, but still incorporate updated improvements.

William J. Martin, R.A., AIA, P.P., AICP
WJM Architect
Westwood, NJ
www.wjmarchitect.com



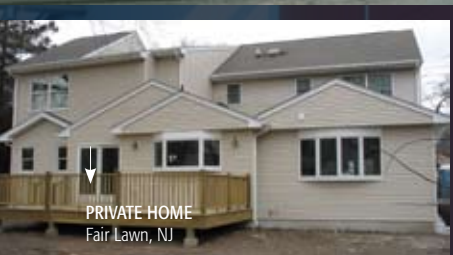
APARTMENT BUILDING
Union City, NJ

15 Residential Units
Manuel J. Pereiras, AIA
Pereiras Architects Ubiquitous
Union City, NJ
manueljpereiras@gmail.com

RECREATION CENTER
British Columbia, Canada

The Recreation Center for a vacation home development called Osprey Landing on Kookanusa Lake in southern British Columbia is perched on a cliff 150 feet off the waterline. The jagged roofline represents the majestic Rocky Mountains seen across the lake as well as the outline of the beloved Canadian Maple leaf.

Piero F. Gabucci AIA
Piero F. Gabucci Architect
Ridgewood, NJ
p.gabucci@verizon.net



PRIVATE HOME
Fair Lawn, NJ

Construction of a new addition which includes a first floor dining room, kitchen with dinette, study, combination laundry / mud room and expanded family room. The addition also included the expansion of the second floor creating a bedroom and enlargement of an existing smaller bedroom.

Ronald Dworkis, AIA
Glen Rock, NJ
rbdia@aol.com



DEBEAUTE SALON & DAY SPA
Montvale, NJ

A day spa and salon:
The exterior building facade to engage a heavily trafficked intersection.
The interior to maintain serenity and tranquility for patrons to which to escape.

John Lignos, AIA, LEED AP
SNS Architects & Engineers, PC
Montvale, NJ
www.sns-arch-eng.com



The bi-annual issue of our members' work

What we do: 3



OBSERVER LOFTS Hoboken, NJ

This is a recently completed 23 unit condominium development in Hoboken. The ground floor parking garage is ringed with street level retail space and the façade of this 5 story concrete structure is composed of alternating brick and zinc bays designed to reflect the scale of the historic Hoboken brownstones.

Dean Marchetto, AIA, PP, CNU
Dean Marchetto Architects PC
Hoboken, NJ
www.DMarchitect.com



BLOOMFIELD COLLEGE, RESIDENCE HALL Bloomfield, NJ

IS&L Architecture Studio was retained by Bloomfield College to convert a 1929 apartment building to a 91 bed dormitory. Located in a historic district, the street façade was restored. The building's interior was gutted to the wood and iron frame structure and seismically reinforced with new framing and two new concrete block fire stair towers. A new elevator was inserted into the former stair shaft and a new at-grade lobby addition was designed for both ADA compliance and building security. The basement which originally contained utility rooms, a boiler and coal storage, was gutted and excavated to allow for additional suites, the campus security offices, and a recreation room. The windows were replaced and the building's new mechanical/electrical systems are designed for maximum energy efficiency. The apartment layouts were reconfigured into dorm suites with new bathrooms, kitchenettes, common laundry rooms, air conditioning, new lighting and both hard and wireless computer connectivity. All of the original wood and terrazzo floors were restored and the original plaster corridor moldings and trim that give the students an 'at home' feeling.

Tony Kowidge
IS&L architecture studio, llc
Fair Lawn, NJ
www.isl-arch.com



APOLLO SIGNATURE RETAIL STORE Englewood, NJ

Apollo Signature's flagship store in Englewood is a medley of geometries. It features a grand salon, display "bar" and shoe salon with sinuous walls that evoke movement and fluidity.

Charles J. Whelan, AIA
Peter L. Hauerstein, RA
salient architects
Englewood, NJ
www.salientassociates.com



LINCOLN SCHOOL EARLY CHILDHOOD ANNEX North Bergen, NJ

Lincoln School Early Childhood Annex is an independent Pre-K/K school sharing a site with an existing elementary school (circa 1929), in a densely populated urban community. Massing and detailing of the Annex respond to the existing historic school and the two to three story residential fabric, while maintaining the urban street front.

Simple, bright, engaging shapes and color identified building systems, hydraulic elevator enclosure, building structure and structural details in public spaces to inform and pique curiosity in young students.

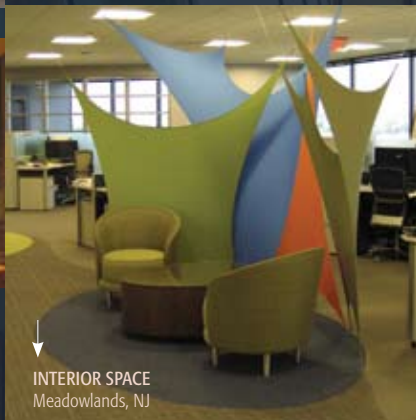
Grace Lynch, AIA PP
L+C Design Consultants, PA
Secaucus, NJ
glynch@malc.biz



INTERIOR SPACE Meadowlands, NJ

Our client was relocating from two separate office locations in NYC and Jersey City to a new location in Metropolitan Center, Rutherford, NJ. They wanted a complete departure from their existing outdated, dark, enclosed facility to a new, fresh, colorful and open space plan. All workstations were to have access to windows, teaming was important so spaces to collaborate needed to be incorporated in their new corporate office layout. Low landscape partitions were used in the 120 degree configuration in very small clusters to promote communication among the various departments. The President has both an office and a workstation. His workstation is in the center of the layout. It is here among all the other employees that he works unless he is meeting with clients. The seating areas are sheltered by tensile fabric screens which repeat the colors used throughout the offices. The client complemented SNS by telling us that their new office surpassed all his expectations.

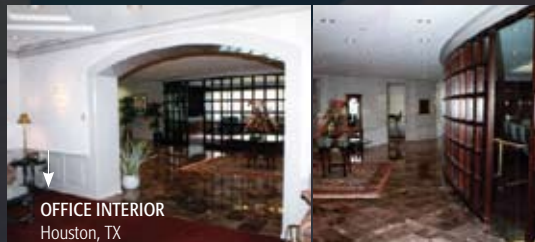
Helen Logan, AIA
SNS Architects & Engineers, PC
Montvale, NJ
www.sns-arch-eng.com



OFFICE INTERIOR Houston, TX

Interior Architecture, interior design, and construction administration by Bobby Kaplan, AIA / Kaplan & Associates, Houston, Texas. Tenant space 20,000 sq.ft. on each of 30th and 31st (top two) floors of a Caesar Pelli office building in the Galleria area of Houston. Bobby's concept created a visual axis when arriving from the elevator through the client receiving area, into the client reception area, and through the windows of the main conference room to a view of the Houston downtown skyline.

Bobby Kaplan, AIA, NCARB
Kaplan Architecture LLC
Closter, NJ
www.bobbykaplan.com



LES MISERABLES THEATER SET Don Bosco Preparatory High School Ramsey, NJ

In between architectural projects, MKM Architects has been involved in theater set design for local high school and grammar school theater programs. In June, Mary was nominated for a Metropolitan High School Theater Award for "Outstanding Achievement in Scenic Design" for Don Bosco Preparatory High School's production of Les Miserables. The set consisted of two barricades that could attach together to form one large barricade and then rotated 360 degrees with actors on it. A 15 foot long bridge was designed to span between the separated barricades.

Mary K. Mitsinikos, AIA
MKM Architects
Upper Saddle River, NJ
www.mkmarchitects.com





HOTEL PALOMAR
Philadelphia, PA

A model of adaptive re-use, The Hotel Palomar occupies the former Architects Building, a 1920's Art Deco high rise. The building has been converted to a 230 room, four star boutique hotel and restaurant which is pursuing LEED certification.

Matt Wolfe, LEED AP, CDT
Jack Paruta, AIA, LEED AP
Brian Easter, LEED AP
Gensler Morristown
Morristown, NJ
www.gensler.com

HIGH POINT SOLUTIONS HEADQUARTERS
Sparta, NJ

This 31,000 sq.ft. energy-efficient building contains offices and warehouse space for a computer networking company. A superinsulated shotcrete structural system provides R-51 roof and R-37 wall insulation. During design, energy modelling software projected that the building would save 50 percent energy compared with a conventional building, but the actual energy use has surpassed that – the completed building saves 75 percent energy.

Alan Spector, AIA
Spector Associates Architects
Lafayette, NJ
www.spectorarch.com



OAK HILL ACADEMY
Lincroft, NJ

By an elevated wetlands trail through a wooded property, The Oak Hill Academy is constructing a free standing Science and Environmental Center for the Science Department grades K-8, that will focus on Environmental and Ecological Studies.

Ralph Rosenberg, AIA PP LEED AP
NK ARCHITECTS
Morristown, NJ
www.nkarchitects.com



POSH CAR WASH
Stratford, NJ

Existing car wash was transformed into state of the art automobile care center. Exterior Facade was raised and clad with bright porcelain tiles to define building functions and to create visual interest. A totally new image is now projected to the community while offering customers the latest technology for car care.

Peter F. Pulice, AIA
PULICE/WILLIAMS ARCHITECTS
Leonia, NJ
www.pulicewilliams.com

ace

REPROGRAPHICS

“Turning Designs into Lasting Impressions Since 1933”

ReproGraphic Services:

- DigiPrinting
- High Speed Duplicating
- ACE Plan Center**
- Large Document Scanning
- Scan-to-File
- CAD Plotting Services
- Wide Format Color Printing
- Digital Color Printing & Copying
- Wide Format Color Scanning
- Outdoor & Vehicle Graphics
- Mounting & Laminating
- Vinyl & Fabric Banners
- Pickup & Delivery

973.684.5945

www.acereprographics.com

Natura®

Free of VOCs
and compromises.



Paint: premium quality
or eco-sensitive?

With Benjamin Moore®
Natura® paint, you'll
never have to choose.

benjaminmoore.com

Benjamin Moore®

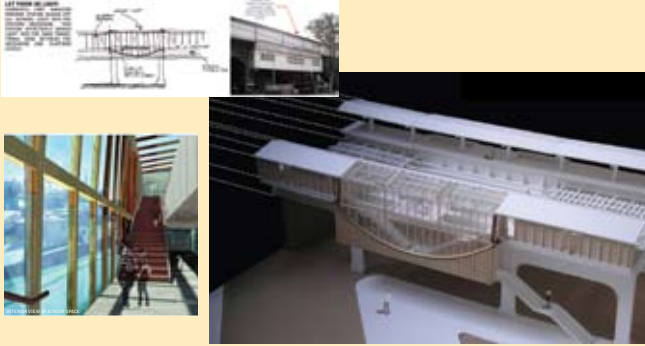


©2009 Benjamin Moore & Co. Benjamin Moore, Natura and the triangle "M" symbol are registered trademarks licensed to Benjamin Moore & Co.

STUDENT SCHOLARSHIP

ALNNJ Student Scholarship Winners (Third in a series of three)

William C. Tate Graduate School of Columbia University (former Undergraduate NJIT)
Received the 2008 AIA Architect's League Scholastic Achievement Award



DESIGN CONCEPT:

The program for this project consisted of the renovation and partial new construction of the West End Line for the MTA. I began by surveying twelve train stations that spanned from Brooklyn to Coney Island. In this exercise, I realized that the demographics changed from station to station, as well as the vernacular qualities of each area.

This design problem compelled me to think through the lens of an urban designer. It became apparent that people change locations through time, so the answer was not to design according to the ethnicities of the region. However, the solution did involve the engaging of each community in an effective way that related to each context.

At Fort Hamilton Parkway specifically, the station is surrounded by retail and a small pedestrian park. I explored the possibilities of opening the existing façade in a new way to allow light and views to celebrate the spaces that inhabitants use daily. By opening the façade, it would change the experience of the place for the travelers and become a much more inviting space.

In the final analysis, from this project I learned that architecture can be approached from the localized sense while addressing much more regional and cultural issues. Ultimately, this exercise was an exploration into using architecture as a device to begin to think largely about urban form beyond its local context.

Leader in EIFS & Traditional Stucco



E. ROBINSON GROUP, INC.
Somerville, NJ

Ph: (908) 722-7702

Fax: (908) 722-6431

ed@erobinsongroup.com

Senergy
www.senergy.basf.com

Visit our Project Portfolio at www.tmbrennaninc.com



Contractor with the Range of Experience & 'Gold Standard' for Quality, Budgets & Schedules



"The finest structures we build are relationships"

3505 Route 94 • Hamburg, NJ 07419
973.209.2545 • Fax: 973.209.1018
www.tmbrennaninc.com

"The 'Gold Standard' of doing business has tarnished over the years but not with T.M. Brennan. It is the only standard that they do business! They have to be the best contractor in the state!"

Borough Administrator, Bloomingdale, NJ

"Project was extremely well managed and executed. It was one of the most efficient operations I've been involved with in the last ten years. I felt Brennan brought a new level of energy to the project. They did what they said they'd do, and on time and on budget."

South Orange and Maplewood School, NJ

"...one of the many things that impress me about T.M. Brennan is that they work through (issues) without stalling. I'd compare their capabilities to contractors...in the \$200-300 million range."

Sowinski and Sullivan Architects

"T.M. Brennan is easy to work with...always looking for ways to produce the best product for the client."

Charles Schaffer Associates, Architects

Educational • Hospitality • Commercial • Industrial • Government • Restoration/Renovation • Residential • Religious



©2009 Marvin Windows and Doors. All rights reserved. ®Registered trademark of Marvin Windows and Doors.

To build this collection, we went
to the best suggestion box of all.
Your job site.

Meet the New Marvin Ultimate Casement Collection

The Ultimate Casement Collection is an innovative line inspired by your suggestions. We've developed operating sizes as large as 40" x 92", full-frame and insert application options and revolutionary hardware for the widest open views and unrivaled performance. All that combined with an exclusive wash mode for easy cleaning from the interior makes this new collection truly ultimate.

Visit marvincasement.com or call 1-888-553-9988
for a free Ultimate Casement Collection brochure.



Announcing A Revolutionary Concept In PL Insurance For NJ Architects: A Choice.

When it comes to professional liability insurance, about the only choice available for architects has been "take it or leave it." With limited options available it's no wonder so many architects overpay for the coverage they know they need. Or worse, leave themselves exposed because adequate coverage is simply unaffordable.

But there is an alternative. Blue-chip professional liability coverage from a

company that knows the profession. Since 1923, Fenner & Esler has been delivering the right amount of coverage and value to professionals and firms of all sizes. We're industry leaders in



FENNER & ESLER
INSURANCE

SINCE 1923

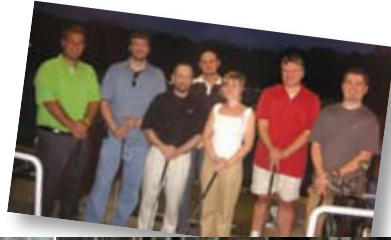
providing customized coverage plans for design professionals and related companies. We represent numerous "A" rated carriers and can provide coverage that's customized, competitive—and flexible. Even if you're in the middle of a multi-year policy, we'd be happy to provide a quote on the exact coverage you need.

Now there's only one choice for you to worry about: will you be contacting us by phone, fax or e-mail?

Call Timothy P. Esler, CPCU: **Toll Free: 1-877-4NJ-ARCH** • (201) 262-1200 • Fax: (201) 262-7810
467 Kinderkamack Road • Oradell, NJ 07649 • E-mail: tesler@fenner-esler.com

10th Annual ALNNJ Golf Outing

July 13, 2009
Apple Ridge Country Club
Mahwah, NJ



The Architect's League held its 10th Annual Golf Outing at the Apple Ridge Country Club in Mahwah, NJ. We had a large number of both architects and vendors turn out for the event – 85 golfers in total. The event was able to raise \$5,000 for League Scholarships. The golf committee would like to thank all those members and vendors who attended and supported the event. Hope to see all of you next year.

A special thanks to the following supporters:

Dinner Sponsor: LAN Associates EPAS, Inc.

Cocktail Hour: Pella Windows and Doors

Closest to Pin: Architectural Windows

Longest Drive: Technical Group Services

Door Prizes: Marquis Agency, Ingersoll Rand, Architectural Windows, Michael Halebian, Johnsonite, Rogge and Patcraft
Hole Sponsors: RS Knapp, Promedia Technology Services, United Clay and Extech Building Materials, Talk of the Town, Kuiken Brothers, Liberty Lighting Group, DMR Architects, Armstrong World Industries, Prosurance Redeker Group, Fenner & Esler, E-Tomic General Contracting, O'Meara Financial and Architectural Windows

Bake Sail

August 16, 2009 Hudson River Sail to Dia: Beacon Art Museum



August 16 was a beautiful Sunday. The town of Beacon was quaint and the Hudson looked very inviting. The Hudson sloop Clearwater, built in 1969 by Pete Seeger and Friends of the Hudson, is a fascinating vessel with much environmental history under its keel. It is primarily through the efforts of Pete and the Clearwater Organization that the Hudson has been cleaned-up over the past 40 years and they continue on that mission. The one problem with our ALNNJ sail was the lack of wind to move and cool us. The strong sun did really bake the hearty 48 members, family and friends. We really did sweat, but all were good sailors and few complaints were heard. Captain Nick and the crew took us out onto the Hudson. Our educator Brian entertained us with history and river lore on the 400th anniversary of Henry Hudson's sail up the Muhheakantuck, "the river that flows both ways" on his ship the Half Moon in 1609. The Hudson, renamed for Henry, is tidal all the way to Albany. We netted (and released) a Hudson River Sturgeon of some size, a real prize on these sails.

Upon return to the dock we walked thru the local farmer's market and moved on to Dia:Beacon, the spectacular re-used industrial structure that has been converted to house the permanent Dia Foundation's collection of major, large works of art. There we ate a lunch of great gourmet sandwiches from the Café and were later guided through the truly spectacular collection by our dedicated docents, David and Charlotte. It was a great afternoon of art and building. Thanks to the Clearwater Organization, Dia:Beacon and all our members who joined us, for this very special day.

THE POWER OF PERSUASION.



Pella's beautiful Mahogany, Alder, Douglas Fir and Pine windows and doors have the amazing ability to turn estimates into sales. That's The Power Of Yellow.®



VIEWED TO BE THE BEST.®

Leagueline

The Architects League
of Northern New Jersey
P.O. Box 152
Paramus, NJ 07653-0152

To:



SHERWIN-WILLIAMS.
Paint Stores Group

David C. Hall, CDT, CSI
Architectural Account Representative

The Sherwin-Williams Company
226 Talmadge Road, Edison, NJ 08817
dave.c.hall@sherwin.com www.sherwin-williams.com
cell: 908-309-8709 fax: 732-248-9730



4 York Avenue · West Caldwell, NJ 07006

Kamran Shushtarian
President

973.618.9545 · f: 973.618.9638 · 800.441.4181
www.mobilityelevator.com
E-Mail: kamran@mobilityelevator.com

NEW

Introducing Kuiken Brothers' GREEN BUILDING WEBSITE

KUIKENBROTHERS.COM/GREEN

Featuring products and applications that can make green building a cost effective reality. You may be surprised at just how many products you are already specifying have "GREEN" and environmentally friendly attributes.



KUIKEN BROTHERS COMPANY, INC.
LUMBER · BUILDING MATERIALS · MILLWORK · KITCHENS
Since 1912

WWW.KUIKENBROTHERS.COM/GREEN

FAIR LAWN ■ EMERSON ■ MIDLAND PARK ■ WANTAGE ■ OGDENSBURG ■ SUCCASUNNA ■ ROSELAND ■ GARFIELD ■ WARWICK